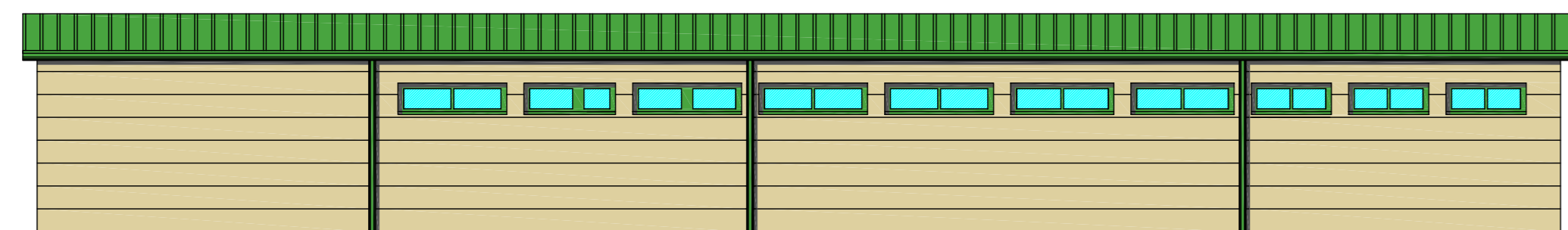
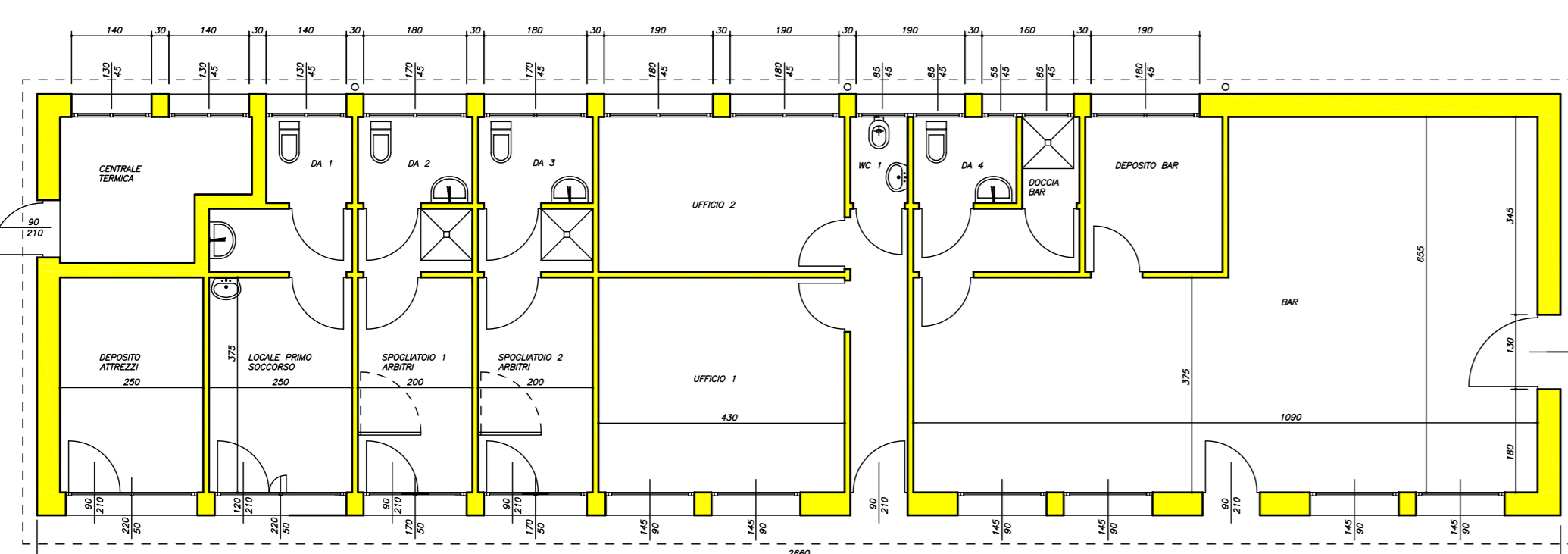


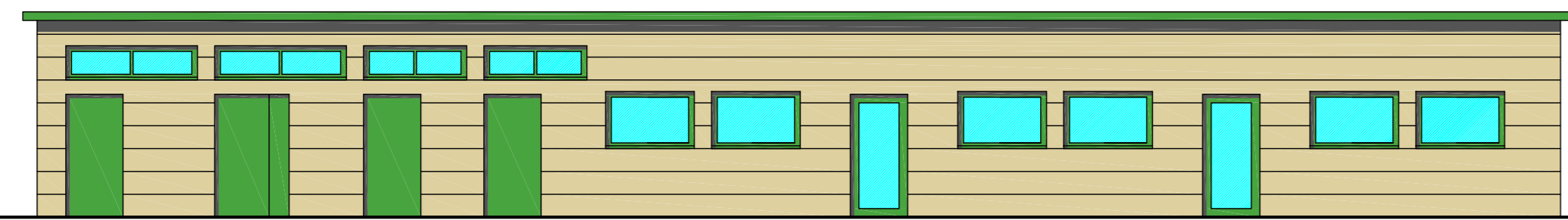
CORPO A - PIANTA COPERTURA



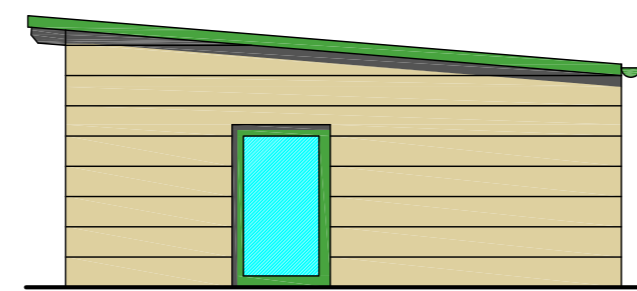
CORPO A - FRONTE EST



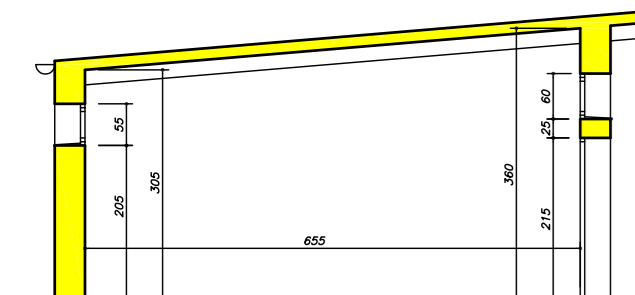
CORPO A - PIANTA



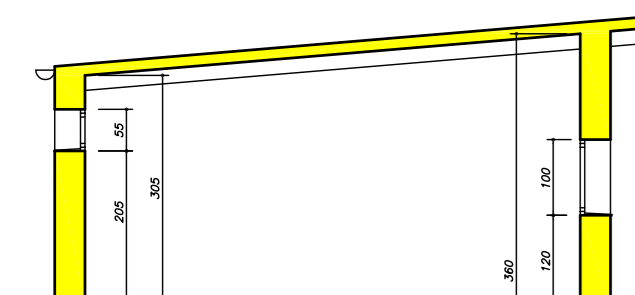
CORPO A - FRONTE OVEST



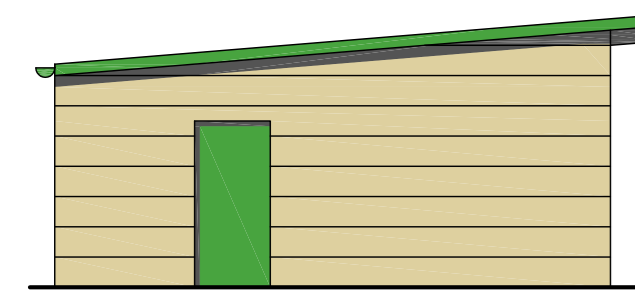
CORPO A - FRONTE SUD



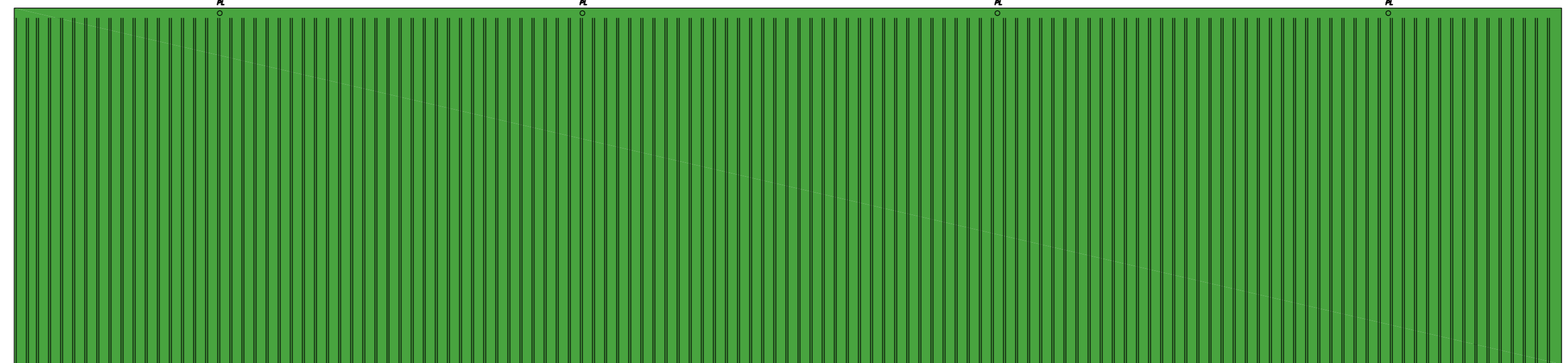
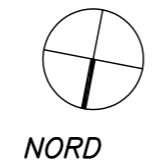
CORPO A - SEZIONE



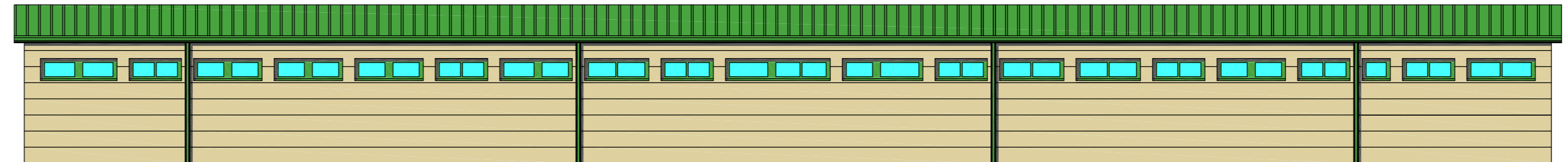
CORPO A - SEZIONE



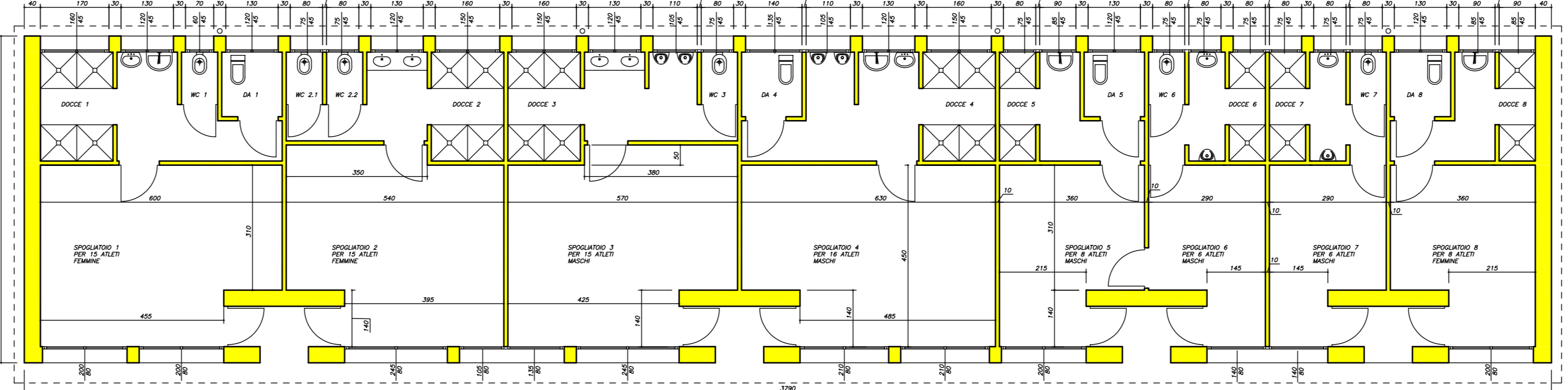
CORPO A - FRONTE NORD



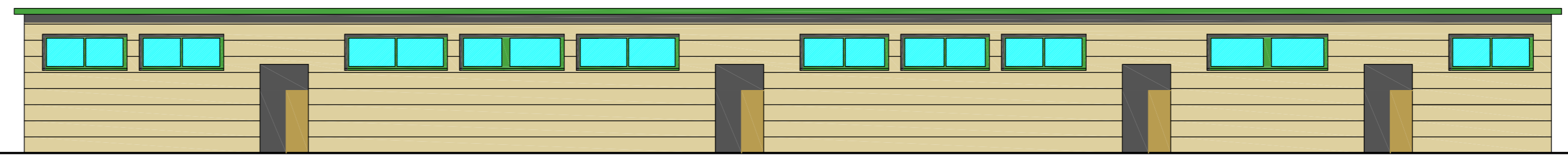
CORPO B - PIANTA COPERTURA



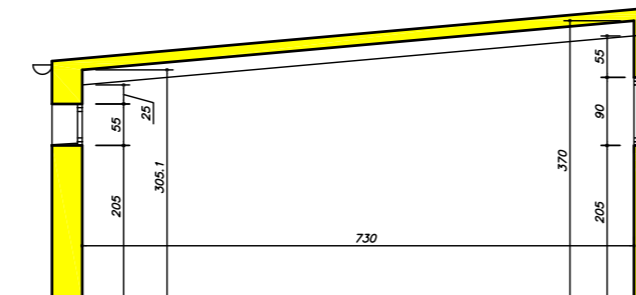
CORPO B - FRONTE SUD



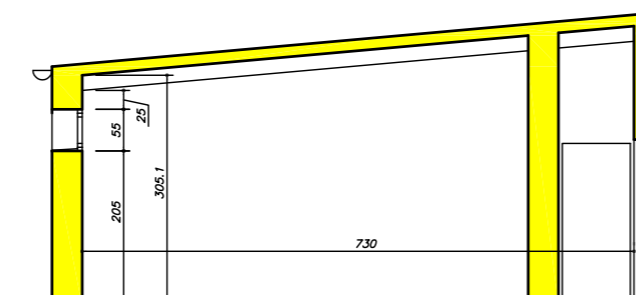
CORPO B - PIANTA



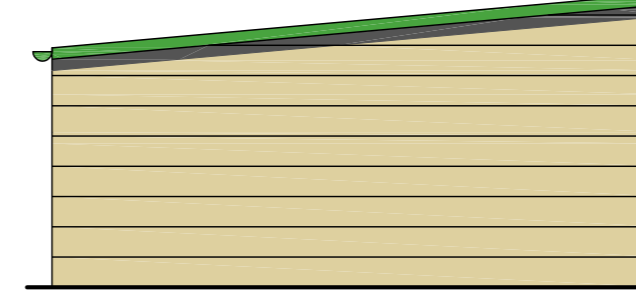
CORPO B - FRONTE NORD



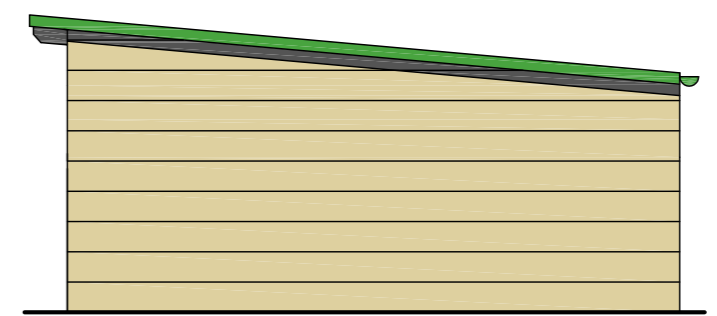
CORPO B - SEZIONE



CORPO B - SEZIONE



CORPO B - FRONTE EST



CORPO B - FRONTE OVEST

Giacomo Mori Paolo Del Pecchia
 ingegneri associati
 20123 Milano - Via Ausonio, 12
 tel. 0258100009-0289401252 fax 0258102613 e-mail:studio@studiodp.it

PROGETTO	RIQUALIFICAZIONE AREA SPORTIVA
COMMITTENTE	ASI COMITATO PROVINCIALE MILANO
LOCALITA'	VIA GIUDITTA PASTA, 43 - MILANO
TITOLO DISEGNO CORPI A e B - PIANTE, SEZIONI E PROSPETTI	

REV.	A	B	C	D	E	F
	DESCRIZIONE MODIFICHE					
DATA	12.02.10					
PROGETTO DEFINITIVO						
DIS.	3					
REV.	A	CTR. CZ				
COMMESSA	0924					
DATA	12.02.10					
DIS.	GM					